



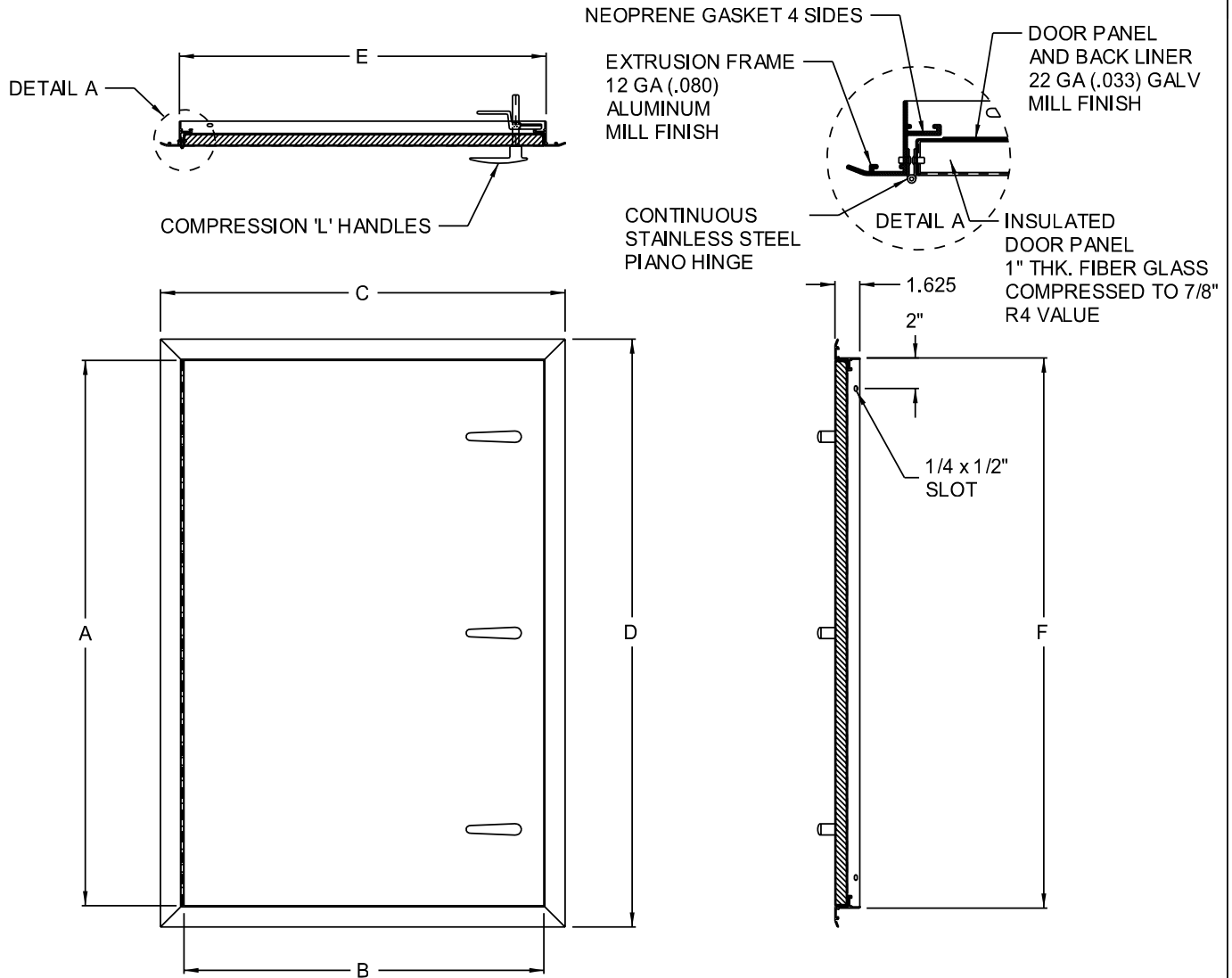
ACUDOR Products Inc.

(Address 1) 80 Little Falls Rd. Fairfield NJ 07004 USA
 (Address 2) 4216 N. Pecos Rd, Ste. 104 Las Vegas, NV 89115
 Tel : 800-722-0501 Fax : (973) 575-5160
 www.acudor.com e-mail : info@acudor.com

WD-8000

WALK THROUGH ACCESS DOOR

| QTY. | NOMINAL SIZE | A | B | C | D | E | F | HANDLES |
|------|----------------------|---------------|--------------|--------------|---------------|----------|-----------|---------|
| | 24 x 36 (610 x 914) | 35.625 (905) | 23.500 (597) | 26.484 (673) | 38.484 (977) | 24 (610) | 36 (914) | 2 |
| | 24 x 48 (610 x 1219) | 47.625 (1210) | 23.500 (597) | 26.484 (673) | 50.484 (1282) | 24 (610) | 48 (1219) | 2 |
| | 24 x 60 (610 x 1524) | 59.625 (1514) | 23.500 (597) | 26.484 (673) | 62.484 (1587) | 24 (610) | 60 (1524) | 3 |
| | 24 x 72 (610 x 1829) | 71.625 (1819) | 23.500 (597) | 26.484 (673) | 74.484 (1892) | 24 (610) | 72 (1829) | 3 |
| | 30 x 36 (762 x 914) | 35.625 (905) | 29.500 (749) | 32.484 (825) | 38.484 (977) | 30 (762) | 36 (914) | 2 |
| | 30 x 48 (762 x 1219) | 47.625 (1210) | 29.500 (749) | 32.484 (825) | 50.484 (1282) | 30 (762) | 48 (1219) | 2 |
| | 30 x 60 (762 x 1524) | 59.625 (1514) | 29.500 (749) | 32.484 (825) | 62.484 (1587) | 30 (762) | 60 (1524) | 3 |
| | 30 x 72 (762 x 1829) | 71.625 (1819) | 29.500 (749) | 32.484 (825) | 74.484 (1892) | 30 (762) | 72 (1829) | 3 |



STANDARD FEATURES:
 DUAL ACTING COMPRESSION HANDLES OPERABLE FROM BOTH SIDE
 GALVANIZED STEEL DOOR, ALUMINUM FRAME, MILL FINISH.

LOCK OPTIONS:

- RIM CYLINDER LOCK AND KEY
- 'L' HANDLE 3 POINT LATCHING

MATERIAL

- STAINLESS STEEL

FINISH

- #4 SATIN POLISH

JOB NAME:

APPROVED BY:

CUSTOMER:

DATE: