

UCSS

UNIVERSAL COVER

Application

- Provides quick, convenient and architecturally pleasing covers to plumbing clean-outs in wet areas

Product Features

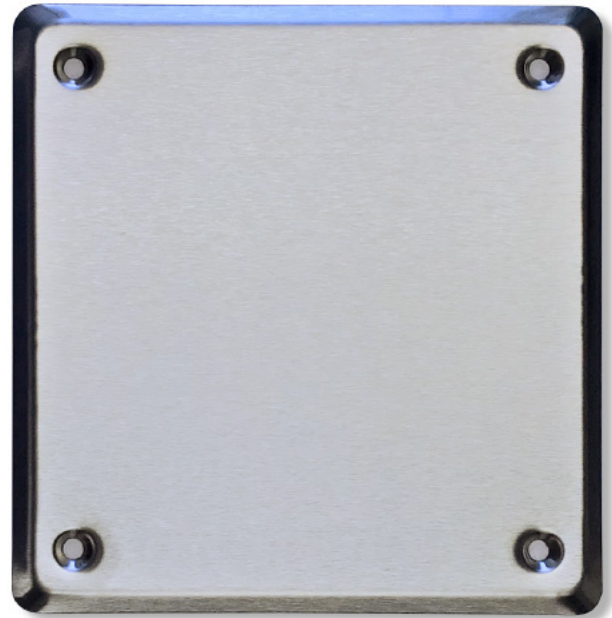
- Corrosion resistant Stainless Steel ensures long life
- Architecturally pleasing appearance in satin brush finish
- Bevelled edges with rounded corners assures safe installation
- Flush counter-sunk mounting screws

UCSS Specifications:

Material: 22 Ga Stainless Steel 304 grade.

Cover: Square shaped, bevelled edges and rounded corners with countersunk holes on each corner for installation screws. 4pcs x Stainless Steel #10 x 1.250" Oval Head Square Tapping screws included.

Finish: #4 Satin Brush



UCSS STANDARD SIZES

Nominal Door Size W&H		Wall opening		Weight per Door	
Inches	mm	Inches	mm	lbs.	kg.
6 x 6	152 x 152	4 x 4	102 x 102	0.31	0.14
8 x 8	203 x 203	6 x 6	152 x 152	0.55	0.25
10 x 10	254 x 254	8 x 8	203 x 203	0.87	0.39
12 x 12	305 x 305	10 x 10	254 x 254	1.25	0.57
14 x 14	356 x 356	12 x 12	305 x 305	1.71	0.77
16 x 16	406 x 406	14 x 14	356 x 356	2.24	1.01
18 x 18	457 x 457	16 x 16	406 x 406	2.81	1.28
24 x 24	610 x 610	22 x 22	559 x 559	5.04	2.28

