

# FD-8060

## FLOOR DOOR Non Hinged, Flush Diamond Plate

### Application

- Designed for interior and exterior applications that require an access opening that will blend in with the surrounding floor material

### Product Features

- Flush Diamond Plate door panel
- Door panel removable via screws

### FD-8060 Floor Door Specifications:

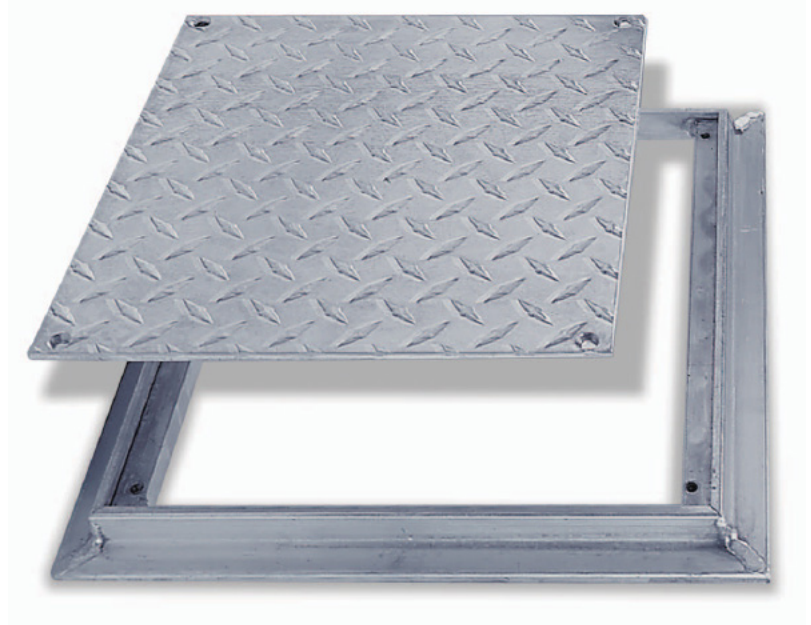
**Material:** Aluminum

**Door:** 1/4" aluminum diamond plate reinforced for the live load of 150 lb/per sq. ft.

**Frame:** 1" x 1" aluminum angle designed to be cast into concrete

**Standard Latch:** Door panel is secured to frame with 1/4" x 1" flat head screws

**Finish:** Mill finish



### FD-8060 STANDARD SIZES

(other sizes available upon request)

Nominal Door Size W&H		Weight per Door	
inches	mm	lbs.	kg.
8 x 8	203 x 203	5	2.0
12 x 12	305 x 305	7	3.0
18 x 18	457 x 457	13	6.0
24 x 24	610 x 610	20	9.0

For detailed specifications see submittal sheet

