

FT-8080-1

FLOOR DOOR, Non Hinged Panel Recessed 1" for Ceramic Tile/Concrete

Application

- Designed for interior and exterior applications that require an access opening that will blend in with the surrounding floor material

Product Features

- Recessed 1" to accommodate ceramic tile/concrete.
- To keep the floor material from cracking or chipping within the door panel, the securing screws are located in the flange of the mounting frame

FT-8080-1 Floor Door Specifications:

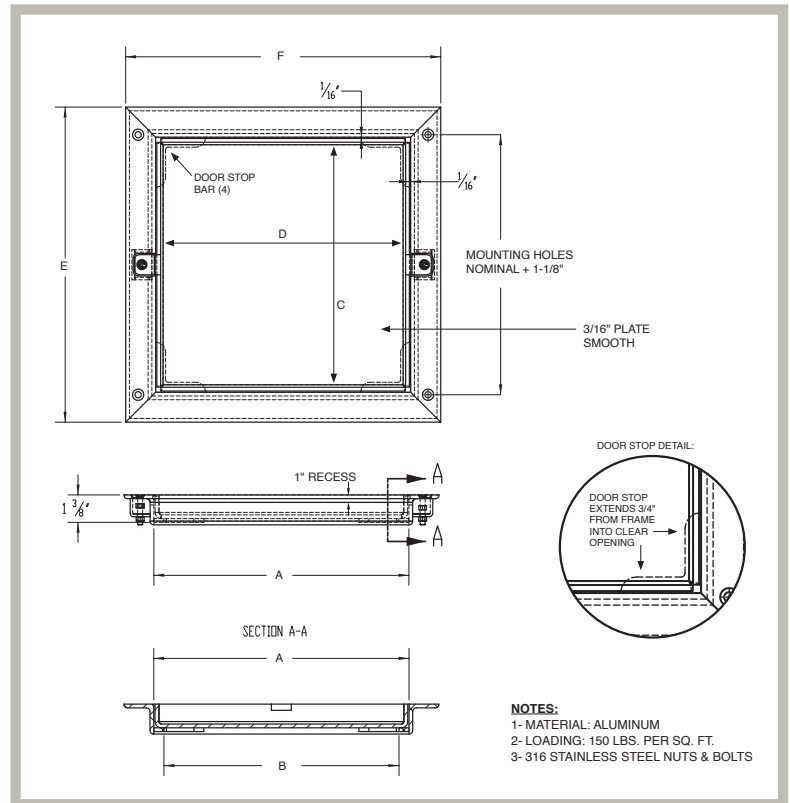
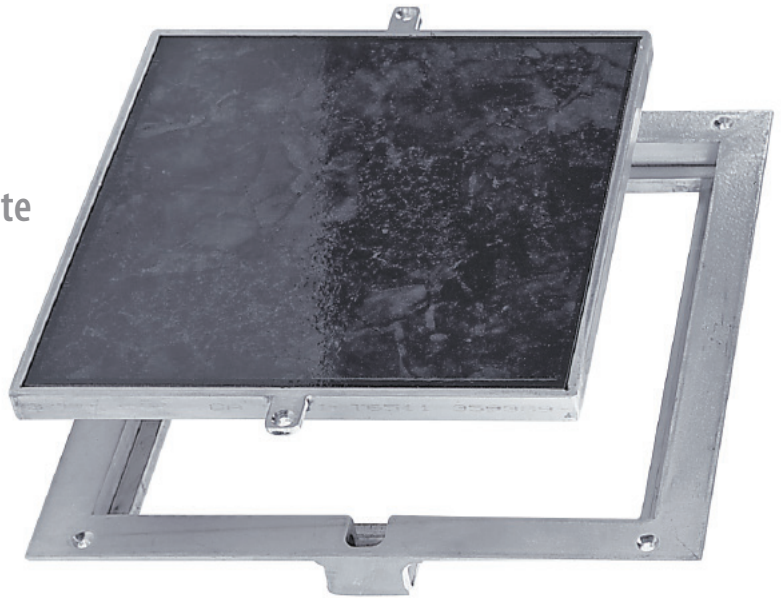
Material: Aluminum

Door: 1/4" smooth aluminum plate reinforced for live load of 150 pounds/sq. ft., recessed 1" for ceramic tile/concrete

Frame: 1-1/2" x 1-1/4" aluminum angle with mounting holes in top flange

Standard Latch: Door panel is secured to frame with 1/4" x 1" flat head screws

Finish: Mill finish



FT-8080-1 STANDARD SIZES

(other sizes available upon request)

Nominal Door Size W&H		Weight per Door	
inches	mm	lbs.	kg.
8 x 8	203 x 203	6	3.0
12 x 12	305 x 305	11	5.0
18 x 18	457 x 457	17	8.0
24 x 24	610 x 610	19	9.0

For detailed specifications see submittal sheet